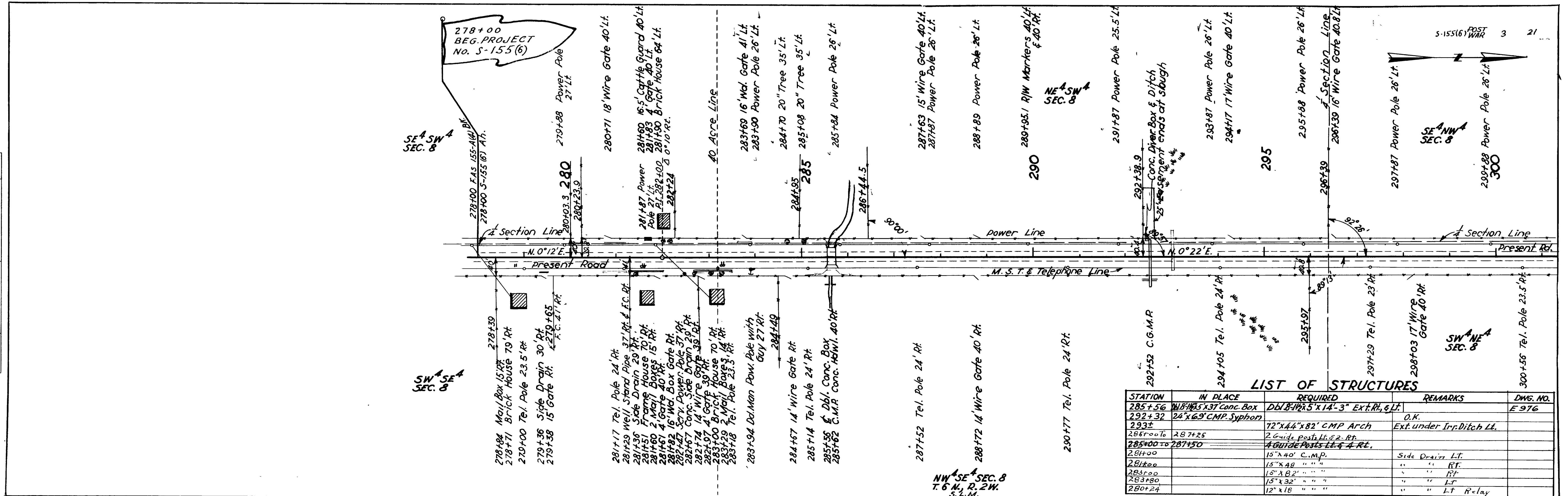
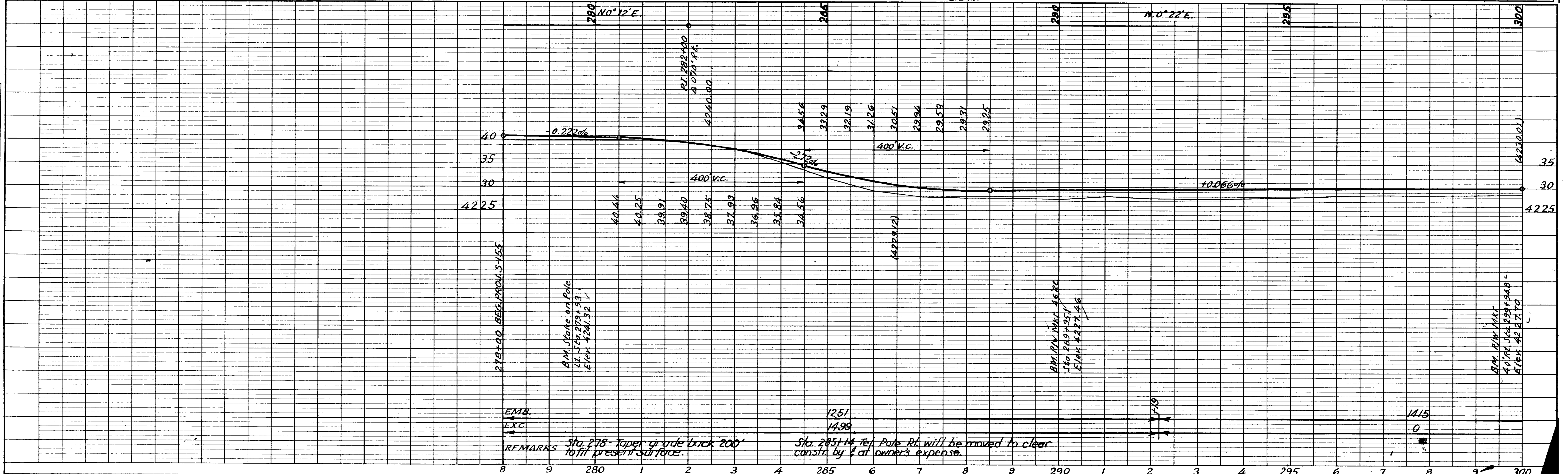


DATE	7/23/53
BY	M.K. MacSaiden
PLAN	NO. 7854
NOTE BOOK	J. Thorne
SWITTEL	Traced
PLUMBED	
ALIGNED	
CHECKED	
APPROVED	

DATE	7/23/53
BY	M.K. MacSaiden
PROFILE	NO. 7854
NOTE BOOK	J.F.N.
SWITTEL	
PLUMBED	
ALIGNED	
CHECKED	
APPROVED	



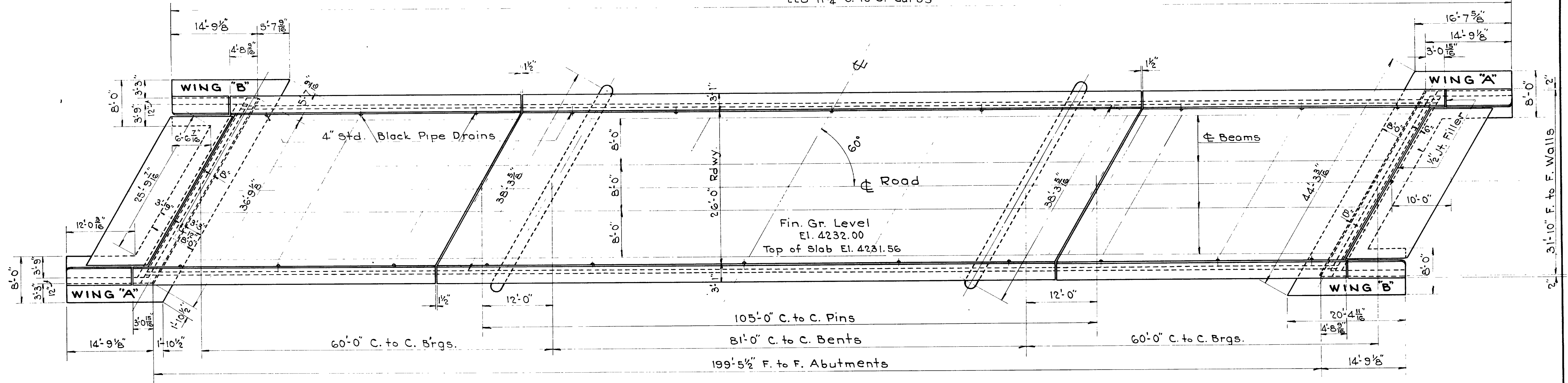
STATION	IN PLACE	REQUIRED	REMARKS	DWG. NO.
285+56	18"x15"x37" Conc. Box	61.8"x12.5"x14"-3" Ext. R.R. & L.F.	O.K.	E 976
292+32	24"x69" C.M.P. Syphon			
293+4		72"x44"x82" C.M.P. Arch	Ext. under Irr. Ditch Lt.	
285+00 to 287+25		2 Guide Posts Lt. & Rt.		
285+00 to 287+50		4 Guide Posts Lt. & Rt.		
281+00		15"x40" C.M.P.	Side Drain Lt.	
283+00		15"x48" " "	" " Rt.	
283+80		15"x32" " "	" " Lt.	
280+24		12"x18" " "	" " Lt. Relay	



REMARKS: Sta. 278 - Top of grade back 200' to fit present surface.

Sta. 285+14 Tel. Pole Rt. will be moved to clear constr. by & at owner's expense.

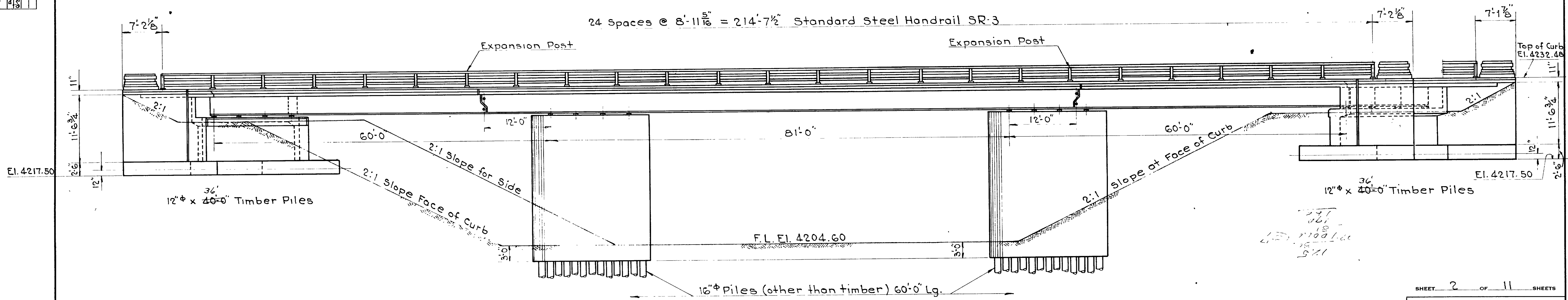
228'-11 3/4" O. to O. Curbs



PLAN

REVISIONS	DATE	BY

24 spaces @ 8'-11 5/16" = 214'-7 1/2" Standard Steel Handrail SR-3



ELEVATION

SHEET 2 OF 11 SHEETS

UTAH STATE ROAD COMMISSION  
SALT LAKE CITY, UTAH  
BRIDGE DEPARTMENT

**WEBER R. BRIDGE**  
205.62 O. to O. 120°X-ING  
Sta. 323+69 S-155 (e)  
Plain City-Hooper Weber Co

DESIGNED BY: F.M.E. SCALE: None  
DRAWN BY: F.M.E. ISSUE: June 24, 1953  
CHECKED BY: R.W.L. APPROVED: [Signature]  
M.G. CHIEF BRIDGE ENGINEER

BR NO 29-231-1-2 DRG NO. C-280